

SCHEDA TECNICA



ANTA UNICA



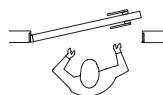
NO TRAVERSO SUPERIORE



TRAPEZIO



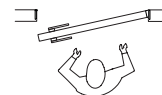
LIBRO



TIRARE DX



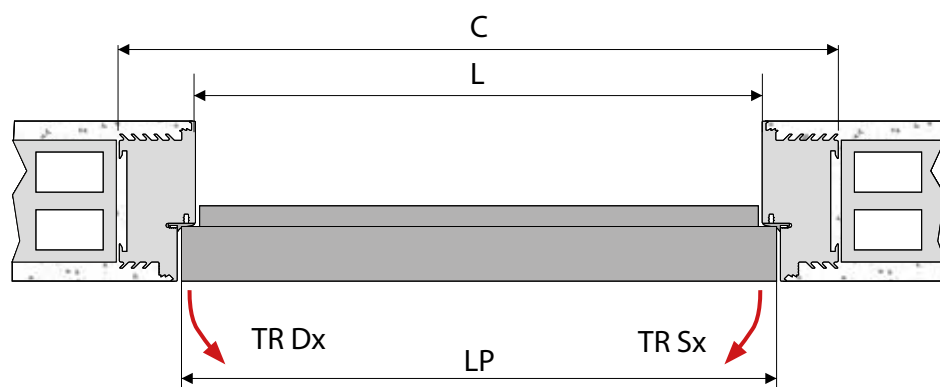
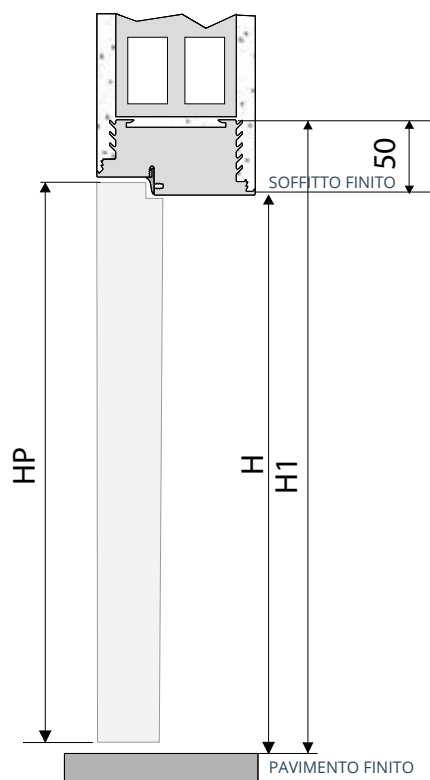
TIRARE SX



SPINGERE SX

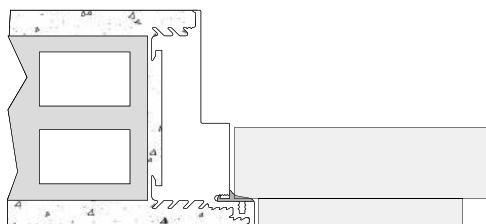


SPINGERE DX

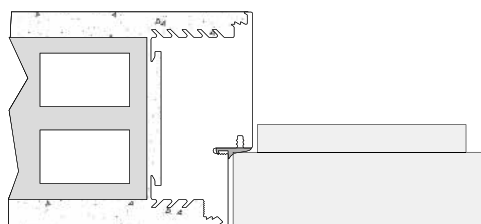


INGOMBRI ANTA UNICA - STANDARD - CON TRAVERSO

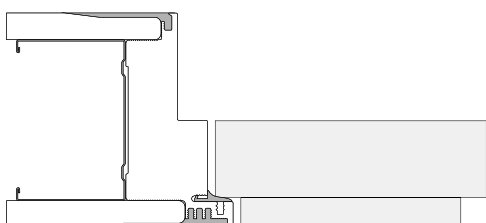
LUCE PASSAGGIO L x H	INGOMBRO C x H1	LP	HP
600 x 2100	700 x 2150	615	2105
700 x 2100	800 x 2150	715	2105
800 x 2100	900 x 2150	815	2105
900 x 2100	1000 x 2150	915	2105
1000 x 2100	1100 x 2150	1015	2105



INTONACO SPINGERE

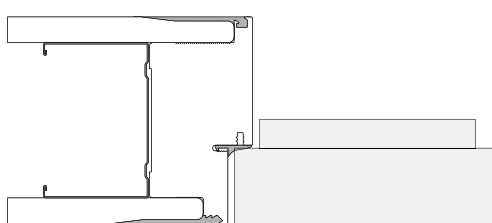


INTONACO TIRARE



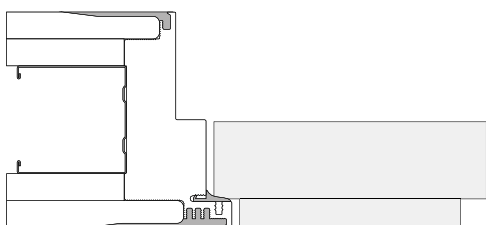
CARTONGESSO SPINGERE

Lastra singola



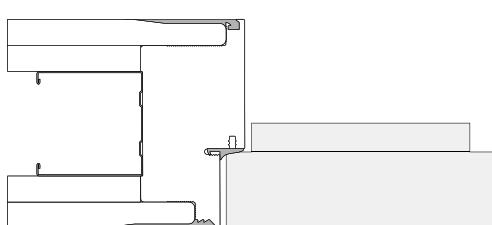
CARTONGESSO TIRARE

Lastra singola



CARTONGESSO SPINGERE

Doppia lastra



CARTONGESSO TIRARE

Doppia lastra